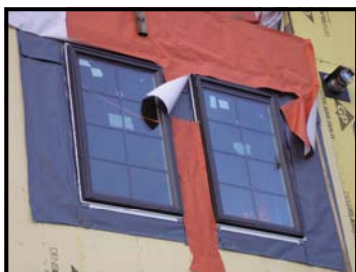


# Products and Specifications



## **Sure Flash®** Professional Window & Door Flashing System



Seattle winds in excess of 80 MPH and yet No damage to Sure Flash Window Flashing!

**Sure Flash** provides a superior Flashing Barrier along with a caulk replacing Adhesive sealing system for application following traditional step process defined by ASTM E2112. **Sure Flash** is equivalent to or exceeds installation standards defined by ASTM and AAMA.

Flange Extension provides easy installation. When Adhesive Seal is positioned over window flange it is encapsulated.

Sequencing corresponds to typical trade installation.

A full 9" flashing around the full perimeter of the opening. Flange Extension may be extended into rough opening for sill pan applications.

12" width Sill Flashing provides up to a 3" flashing extension into rough opening.

Self sealing zone around window at sill, jambs and head.

Designed for all windows and doors installed in vertical wall surfaces with a continuous and integral nailing flange. Sure Flash integrates with building papers and housewraps.

### Warranted Product Specifications:

#### Components:

##### Flashing Fabric

Fabric base is 100 % Spun-bonded Polypropylene  
Coating - Polyolefin  
Weight - 4 oz Per Square Yard  
Thickness - 10 mils  
Tensile Strength (grab method) - 95 lbs per inch  
Tensile Strength (ASTM D-828) - 32 lbs.  
Water Vapor Permeance (ASTM E-96) < 1 perm (fabric with tape)  
Water Resistance (ASTM D779) - greater than 24 hours  
UV Resistance - Cover within 6 months

##### Acrylic Adhesive Tape

Double Coated Polyolefin Foam  
1/16th Inch Thickness by 1 to 3 Inch Width  
UV Resistant Polymer  
Certified under AAMA 810.1, Type 1 Expanded Foam Glazing Tape  
Service Temperature -20° F to 175° F (-29° C to 79° C)

##### Sill Pan & Shims -

Plastic extrusion with acrylic adhesives and poly release liner

##### Other Adhesive Tapes -

Sealant is a 100% solids formulation of thermoplastic elastomeric and synthetic resins. 25-60 mils thick. Films are polyethylene.  
Service Temperature -20° F to 175° F (-29° C to 79° C)

### **Flashing Products Inc.**

2319 Federal Avenue East  
Seattle, Washington 98102  
(206) 568-6633  
(206) 568-3377 FAX  
sales@sureflash.com  
www.sureflash.com

**Storage:** Store in a clean, dry environment at room temperature until application.

**Application Temperature:** Comply with temperature requirements of all other components interfaced with Sure Flash. Adhesives are to be applied at temperatures above freezing and surfaces are to be free of dirt, frost and moisture.



**Sure Flash<sup>®</sup>**  
**Professional Window  
 & Door Flashing System**

***Sure Flash - Wrap***

Flashing Membrane is 100% Polyolefin.  
 Won't tear easily and High UV Tolerance  
 200900 -  
 201200 -  
 201800 -  
 202400 -  
 202800 -

***9" X 300'***  
***12" X 300'***  
***18" X 300'***  
***24" X 300'***  
***28" X 300'***



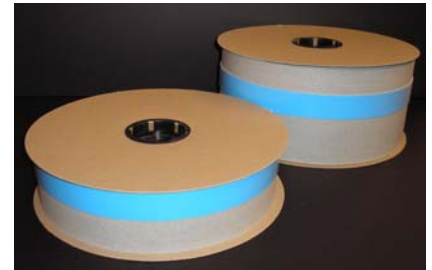
***Flange Extension***

(Patents Pending)

1.5" Closed Cell Foam & Acrylic Seal and:

210315 - 3" Extension  
 210615 - 6" Extension  
 210915 - 9" Extension

***3" X 150'***  
***6" X 150'***  
***9" X 150'***



***Adhesive (seal) Flashing***

(Patents Pending)

Flashing Membrane and:

220915 - 1 1/2" Closed Cell Foam & Acrylic Seal  
 220930 - 3" Closed Cell Foam & Acrylic Seal  
 221215 - 1 1/2" Closed Cell Foam & Acrylic Seal  
 221230 - 3" Closed Cell Foam & Acrylic Seal  
 221815 - 1 1/2" Closed Cell Foam & Acrylic Seal  
 221830 - 3" Closed Cell Foam & Acrylic Seal

***9" X 150'***  
***9" X 150'***  
***12" X 150'***  
***12" X 150'***  
***18" X 150'***  
***18" X 150'***



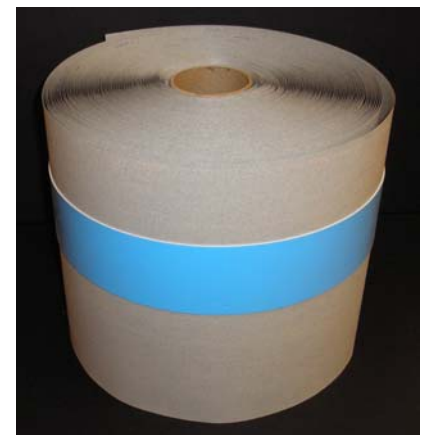
***Sill Flashing***

(Patents Pending)

Flashing Membrane &

231230 - 3" Closed Cell Foam & Acrylic Seal  
 231830 - 3" Closed Cell Foam & Acrylic Seal

***12" X 150'***  
***18" X 150'***



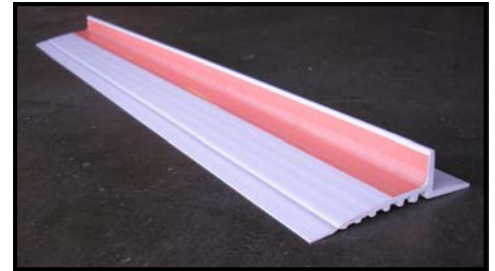


**Sure Flash<sup>®</sup>**  
**Professional Window  
 & Door Flashing System**

**Sill Pan**

PVC 8' X 2" X 1/4" sloped shim with acrylic adhesive & release liner

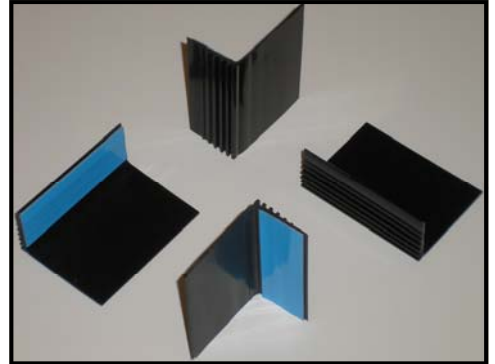
240210 -



**Sill Shim**

PVC 4" X 1.5" X 3" leveling block with adhesive & release liner

240310 -



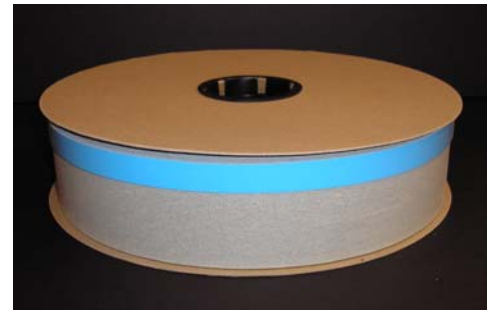
**Sill Pan Drain Screen (optional)**

(Patents Pending)

1/2" Closed Cell Foam & Acrylic Seal and:

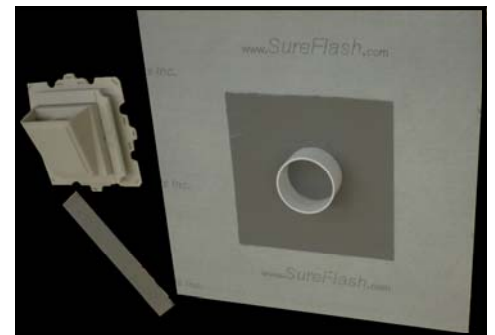
240410 - 3" Extension

**3" X 150'**



**Penetration Flashing – 60 mil** Sealant is a 100% solids formulation of thermoplastic elastomeric and synthetic resins.

272460 - 24" X 24" Flashing with 12" X 12" Adhesive & 12" X 2" Mesh Tape  
 (vent not included)



**Sure Flex Tape – 60 mil** Sealant is a 100% solids formulation of thermoplastic elastomeric and synthetic resins.

300460 -

**4" X 50'**

300660 -

**6" X 50'**

300960 -

**9" X 50'**





**Sure Flash<sup>®</sup>**  
**Professional Window  
 & Door Flashing System**

**Foam Sealing Tape**

Foam with acrylic adhesive

310115 -

**1 1/2" X 185'**

310330 -

**3" X 185'**

Used at window jamb and head over flange for ganged windows –



**Sure Seal Tape** - Sealant is a 100% solids formulation of thermoplastic elastomeric and synthetic resins.

(\*FOB Portland Oregon or Stockton California)

320225 -

**25 mil thickness**

**2" X 100'**

320250 -

**50mil thickness**

**2" X 50'**

320425 -

**25 mil thickness**

**4" X 100'**

320450 -

**50mil thickness**

**4" X 50'**

320625 -

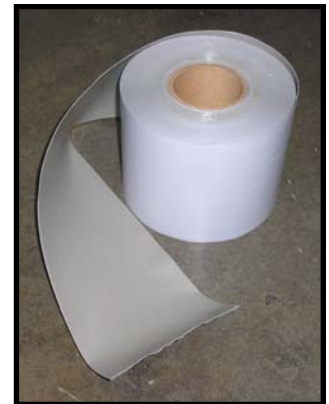
**25 mil thickness**

**6" X 100'**

320650 -

**50 mil thickness**

**6" X 50'**



**Mesh Tape** - conforms to rough surfaces & does not stretch, great for inside and outside corners

330250 -

**50 mil thickness**

**2" X 50'**

330450 -

**50 mil thickness**

**4" X 50'**

330650 -

**50 mil thickness**

**6" X 50'**



**Moldable Sealant – 60 mil double sided** Sealant is a 100% solids formulation of thermoplastic elastomeric and synthetic resins.

(\*FOB Portland Oregon or Stockton California)

340260 -

**60 mil thickness**

**2" X 50'**

340460 -

**60 mil thickness**

**4" X 50'**

340660 -

**60 mil thickness**

**6" X 50'**



**Flashing Products Inc.**  
 2319 Federal Avenue East  
 Seattle, Washington 98102  
 (206) 568-6633  
 (206) 568-3377 FAX  
 sales@sureflash.com  
 www.sureflash.com